



# DENGUE ALERT

The Dengue virus is spread to persons  
by the bite of an infected *Aedes* mosquito.

Symptoms of Dengue usually  
include:

- ✓ Sudden onset of fever
- ✓ Headache
- ✓ Joint pains
- ✓ Vomiting
- ✓ Skin rash
- ✓ Muscle pains
- ✓ Pain behind the eye
- ✓ Diarrhoea

If you experience one or more of  
these symptoms:

- ✓ Use **ONLY** paracetamol pain killers
- ✓ Do **NOT** take ibuprofen, diclofenac or aspirin as it may cause bleeding
- ✓ Drink lots of fluid
- ✓ Rest
- ✓ Visit your doctor or nearest health centre and follow instructions carefully.

Seek **IMMEDIATE**  
medical attention if you  
experience any of the following signs:

- Severe belly pain
- Persistent vomiting
- Bleeding from mouth, nose or any unusual bleeding
- Bloody or black, sticky stool
- Feeling faint
- Low energy or restlessness
- Small bleeding spots under skin
- Shortness of breath or difficulty breathing.

FOR MORE INFORMATION, CONTACT:

• 888- ONE LOVE (888-663-5683) • Your Parish Health Department

[www.moh.gov.jm](http://www.moh.gov.jm)

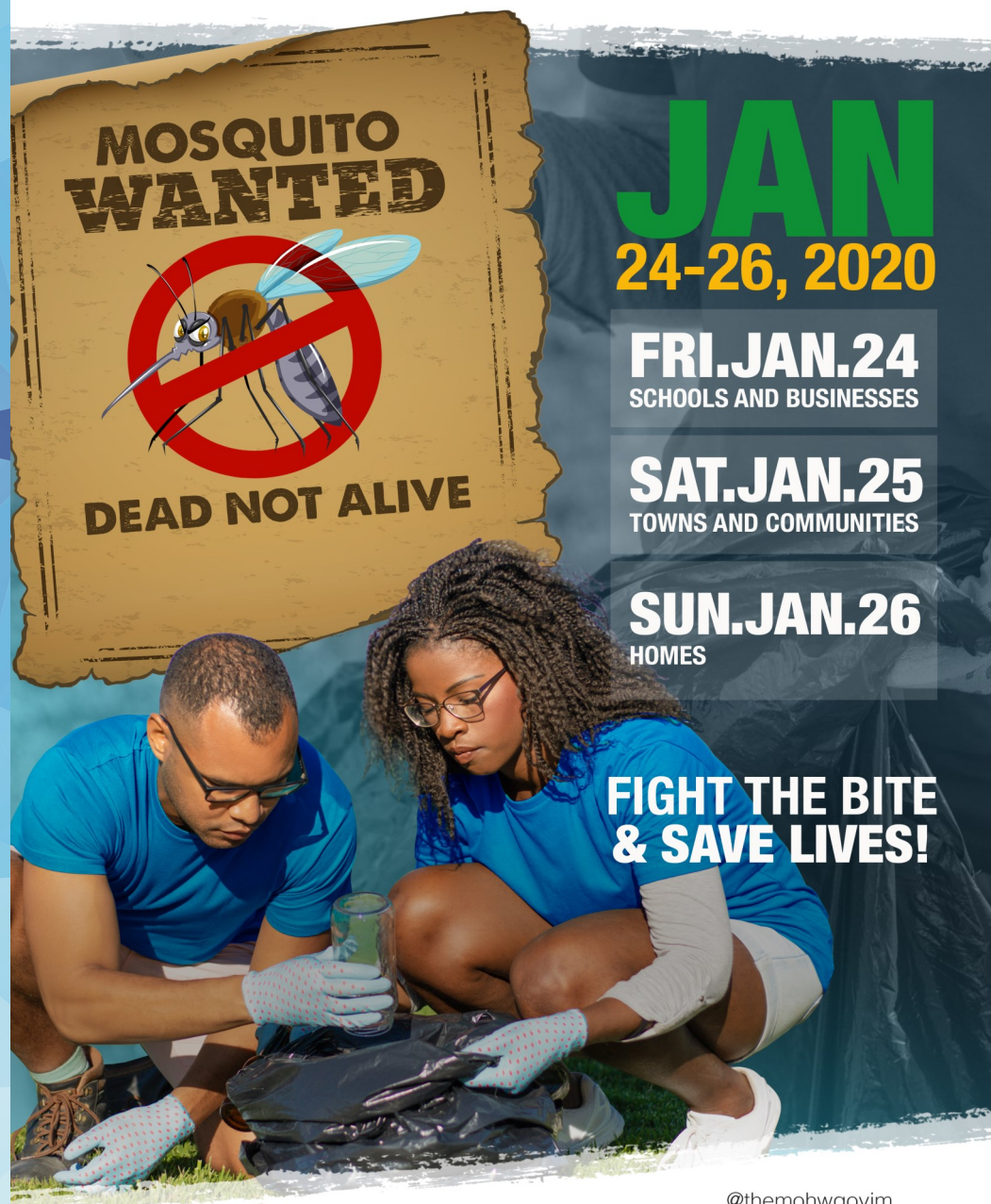


@themohwgovjm



# NATIONAL DENGUE CLEAN UP

Join us as we search for and destroy  
mosquito breeding sites



@themohwgovjm

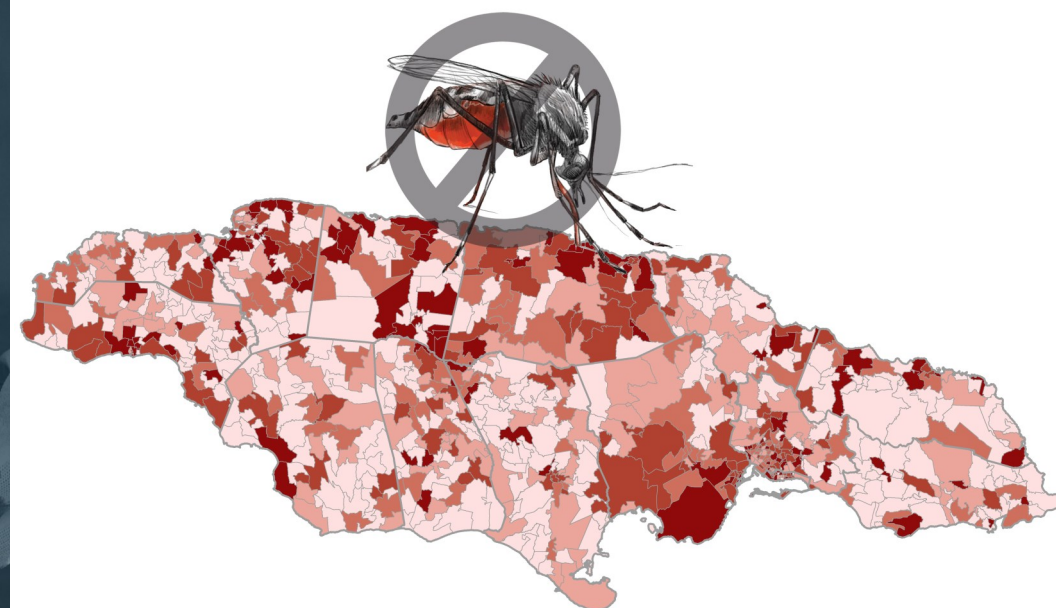


888-ONE-LOVE(663-5683) | [www.moh.gov.jm](http://www.moh.gov.jm)

#denguecleanup #mosquitowanteddeadnotalive



## JAMAICA Dengue at a Glance (January 2018 - December 2019)







# Dengue in Jamaica

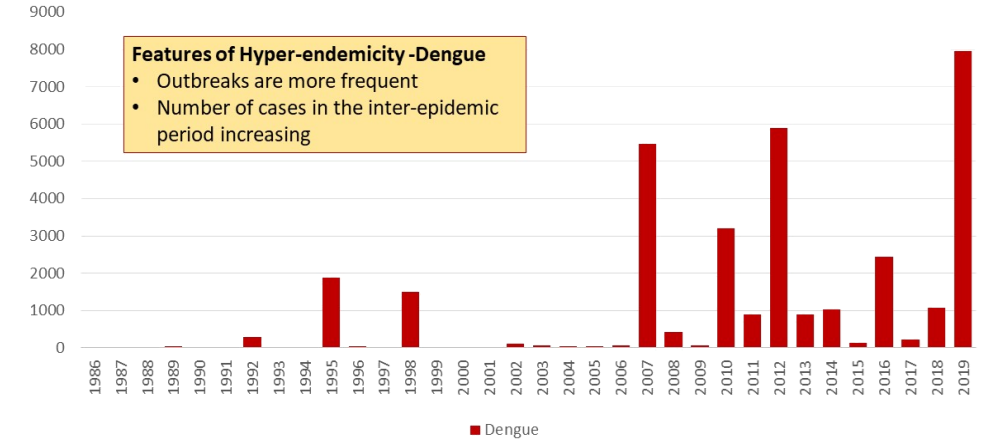
# Dengue Maps

# Hospitalizations

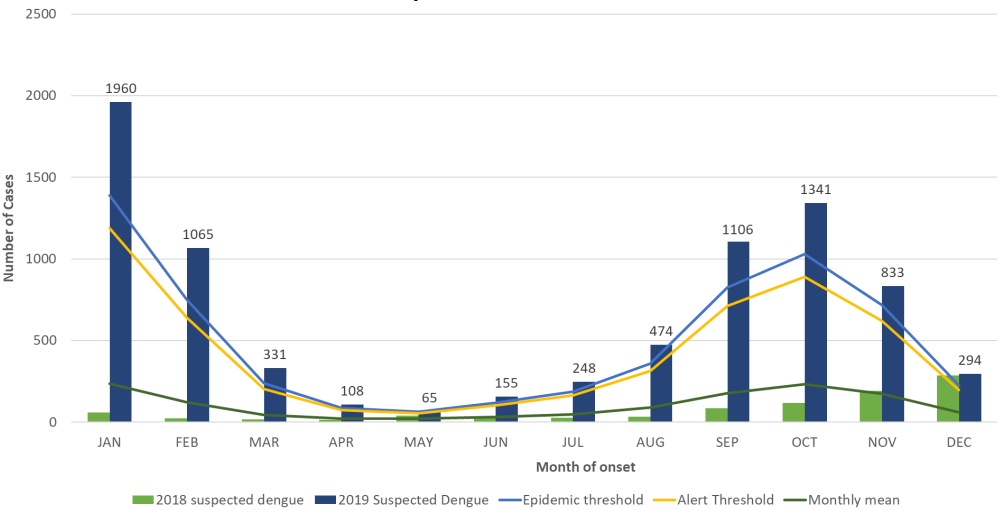
## Dengue in Jamaica 1986-2019

As at 9<sup>th</sup> January, 2020

REPORTED CASES OF ARBOVIRUSES, JAMAICA 1986-2019



## Suspected dengue cases for 2018 and 2019 versus monthly mean, alert, and epidemic thresholds



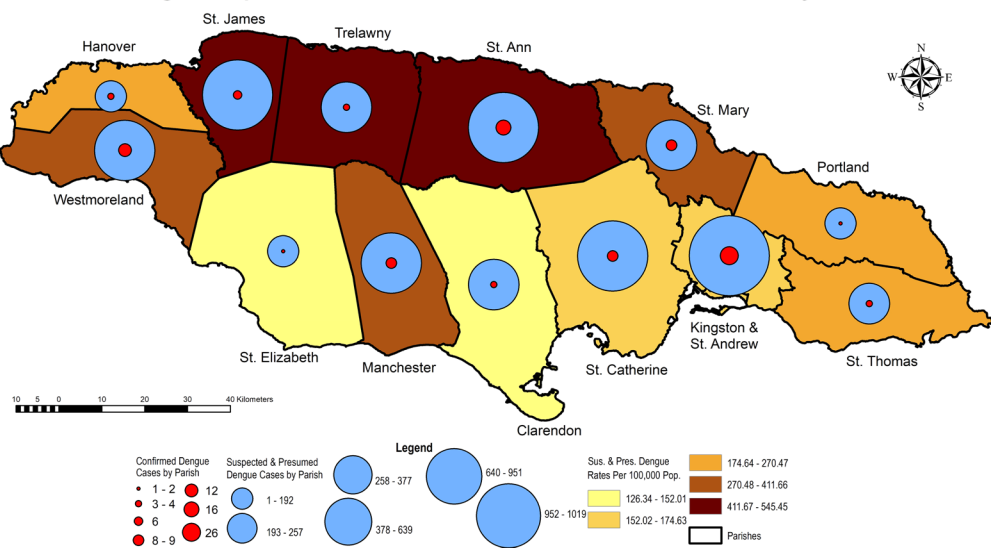
Between January 1, 2018 and December 31, 2019 the Ministry of Health and Wellness has received:

**9,356** cases that have been classified as Suspected/Presumed/Confirmed

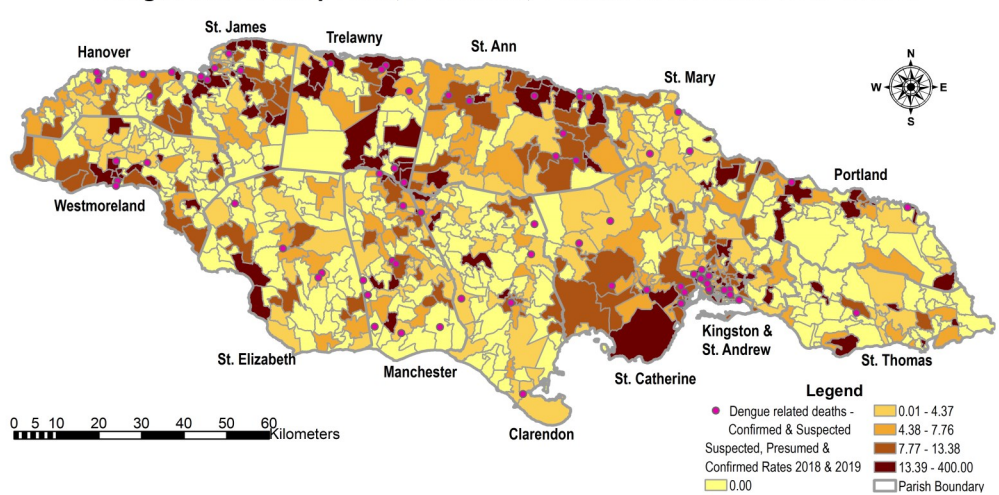
Among these Suspected/Presumed/Confirmed Cases

**2,057** were Admitted to Hospitals

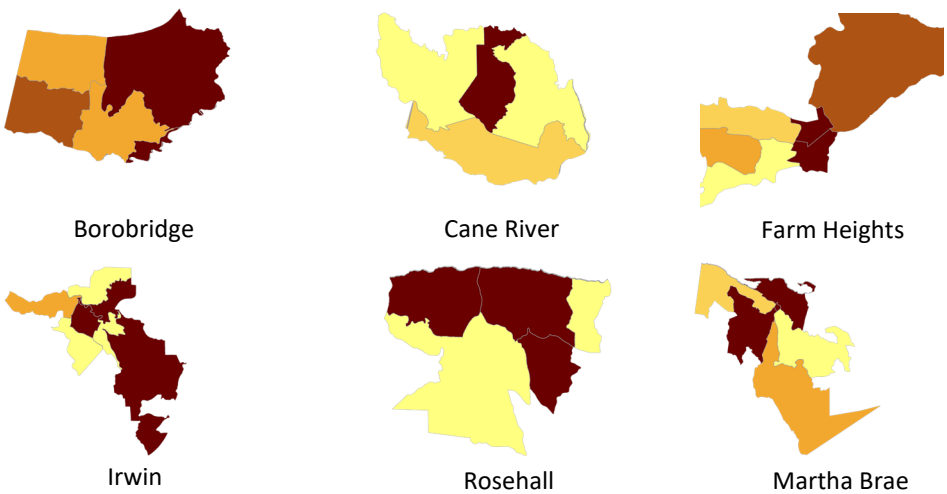
## Dengue Suspected & Presumed Cases, Rates & Confirmed Cases by Parish



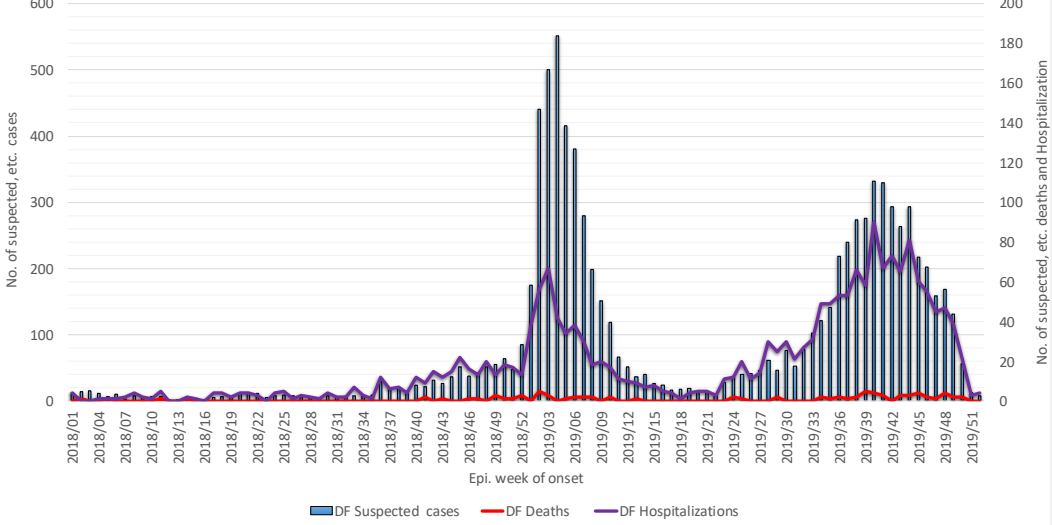
## Dengue Rates: Suspected, Presumed, Confirmed & Deaths 2018 & 2019



## Communities with the Highest Dengue Rates



## Number of dengue cases, hospitalizations and deaths, January 2018 to December 2019 - Jamaica



	2018	2019	Total
Number of Suspected and Confirmed Cases	1,066	8,290	9,356
Number of Hospitalization – Suspected and Confirmed	365	1,692	2,057
Percent of Suspected & Confirmed Admitted to Hospital	34.2%	20.4%	22.0%
Number of deaths (suspected & confirmed)	17	64	81
Percent of hospitalized who discharged home	95.3%	96.2%	96.1%
Percent of hospitalized who died	4.7%	3.8%	3.9%

## Costing

### Average Admission Cost

Adult

\$116,249.40

Child

\$213,362.94